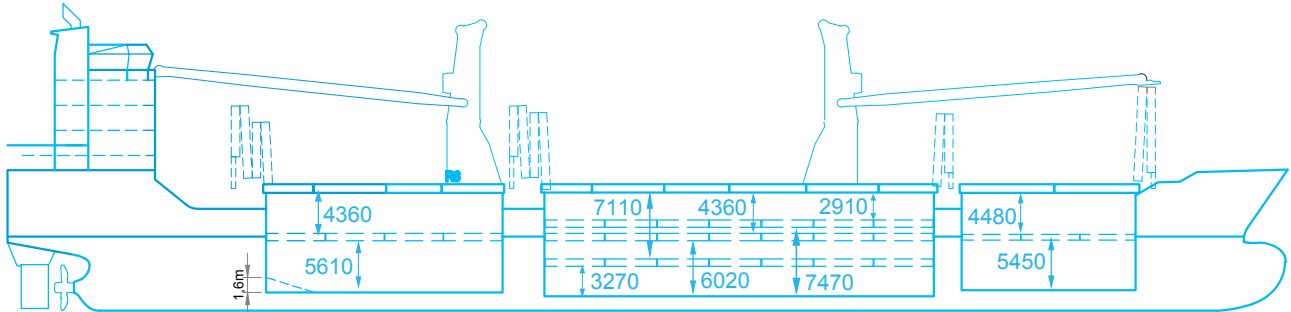




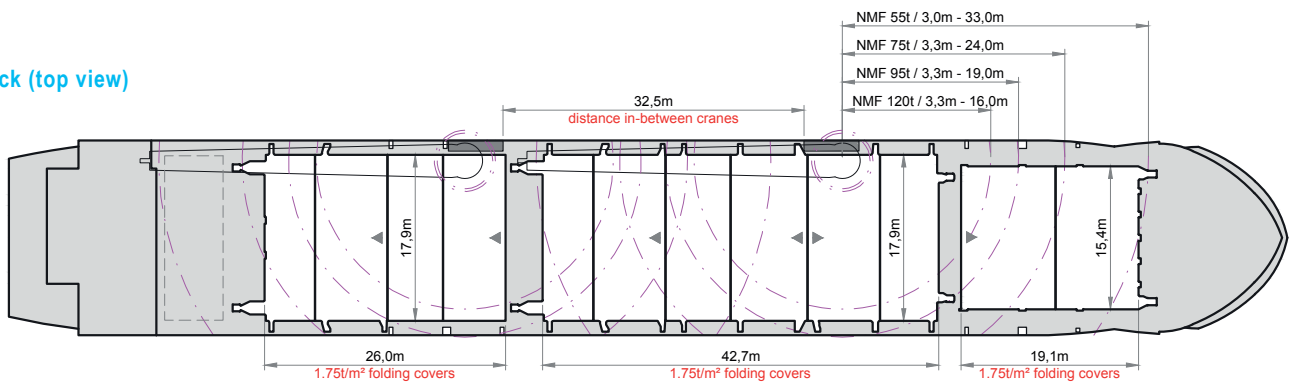
GENERAL INFORMATION	
Name	UAL MANITOBA
Type	MPP Dry Cargo Ship
IMO	9384320
Built	2007
Flag	PORTUGAL
Class	KR
Call Sign	CQMV
TONNAGE	
DWT	12717 mt
GT	9611 mt
NT	4260 mt
MAIN DATA	
LOA	138,07 m
Beam	21,00 m
Summer Draft	8,00 m
HOLDS / HATCHES	
Number	3 Holds / 3 Hatchcovers
Hold Dimensions	
Hold No.1	18,75 m x 15,019 m/ 10,056 m (narrow forward)
Hold No.2	42 m x 17,5 m
Hold No.3	25,5 m x 17,5 m
FLOOR SPACE	
Under Deck	2866,22 m2
On Deck	1447,90 m2
Total	4314,12 m2
CARGO CAPACITY	
Total Capacity	15.953 CBM / 563.340 CBFT

PERFORMANCE	
Max Speed	15,0 Kts
DECK STRENGTHS	
Tanktop	16 mt/m ²
Tweendeck	H1 : 2,5 mt/m ²
	H2 Upper : 2,5mt/m ² ; Middle : 4,0mt/m ² ; Lower : 4,0mt/m ²
	H3 : 4,0 mt/m ²
Hatchcover	1,75 mt/m ²
CONTAINER CAPACITY	
In Hold	334 TEU
On Deck	331 TEU
Total (Nonimal)	665 TEU
Stackweight on deck	50 mt/TEU; 65 mt/FEU
Stackweight under deck	90 mt/TEU; 120 mt/FEU
Reefer Plugs	25
CARGO / HANDLING GEAR	
Cranes	2 Cranes; Each up to 120mt
Comined Lift Capacity	240 mt
Position	Port Side
Automode	No
Hatch Gantry	No
SPECIAL EQUIPMENT / FEATURE	
Highest Iceclass	Yes, Ice Class IA
CO2 Fitted	Yes
Bowthruster	1 X 500 Kw (670 HP)
IMO 1-9 Fitted	Yes
A60 Bulkhead	Yes
Grain Fitted	Yes

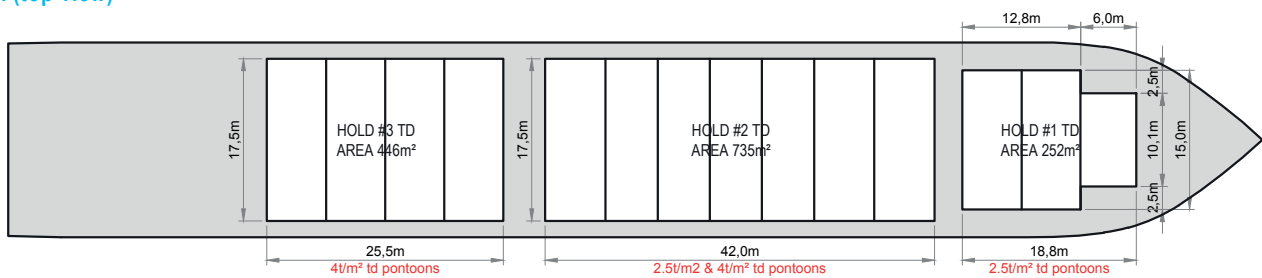
Side view



Weather deck (top view)



Tween deck (top view)



Tanktop (top view)

