

Capelle a/d IJssel, 12<sup>th</sup> July 2021

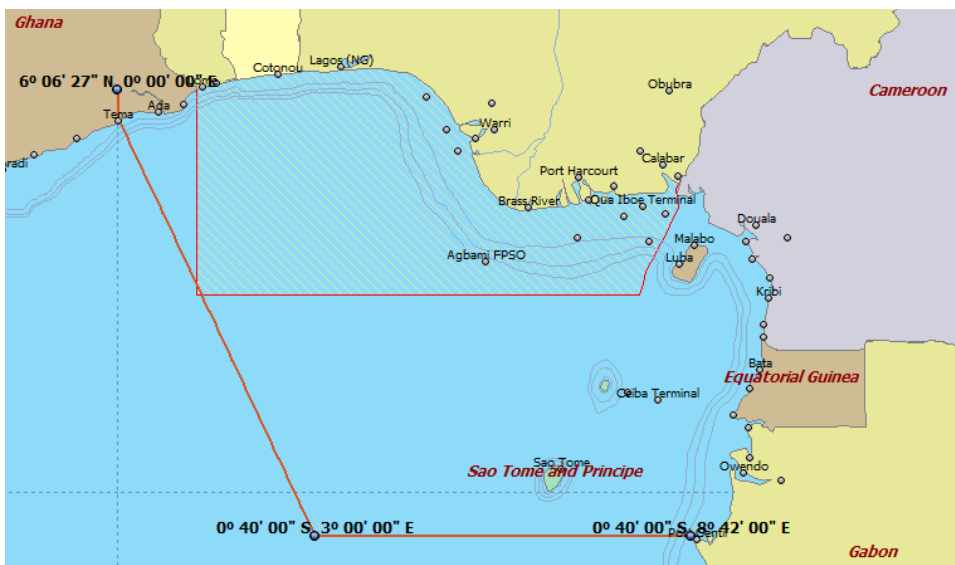
Re. High Risk Area Surcharge (HRA)

Dear Customer,

The Joint War Committee recently expended the high risk area to include the following countries: Gabon, Equatorial Guinea and Cameroon (\*). Subsequently this has significantly increased our costs and risk in the region. Therefore UAL is left with no other option than to apply a high risk surcharge in order to be able to maintain the level of our service you are used to. For more detailed info pls see [www.lmalloyds.com](http://www.lmalloyds.com) and [www.iua.co.uk](http://www.iua.co.uk).

The surcharge will be effective as from July 1st, 2021 (B/L date) for all new bookings.

Amount : Eur 10,- w/m; Eur 150,- per TEU



(\*) Additional countries might be added depending on situation in the region.

When you have questions please don't hesitate to contact us and we will be gladly be of assistance.

UAL Netherlands  
As general agent to Universal Africa Lin